

Advanet Inc.

PCIe CC-Link IE TSN Board

AdEXP1589

Intelligent PC board that can operate as a master/local station of CC-Link IE TSN

Network: CC-Link IE TSN

Station type: Master station, local station

Supported OS: Intime, etc.

Communication cycle: 125μs

Mitsubishi Electric Communication LSI CP610

Equipped with NXP LS1027A

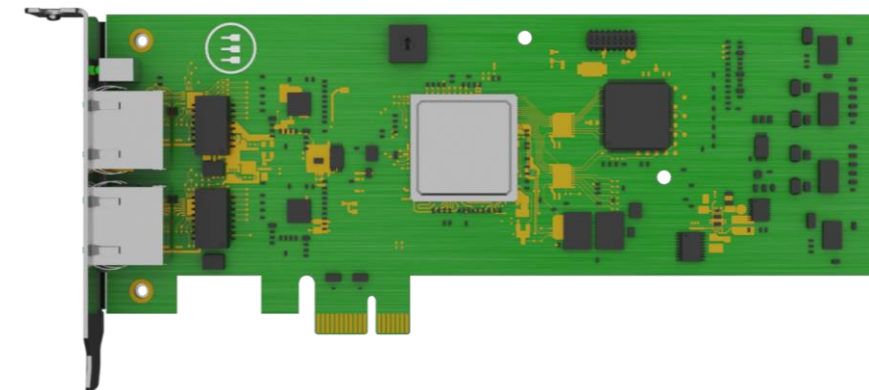
Feature

Communication with CC-Link IE TSN master/local station can be added to existing systems without overloading the host CPU

Bracket replacement supports both Low profile and Standard height slots.



Under development



Inquiries: sales@advanet.jp
<https://www.advanet.co.jp/contact-us>